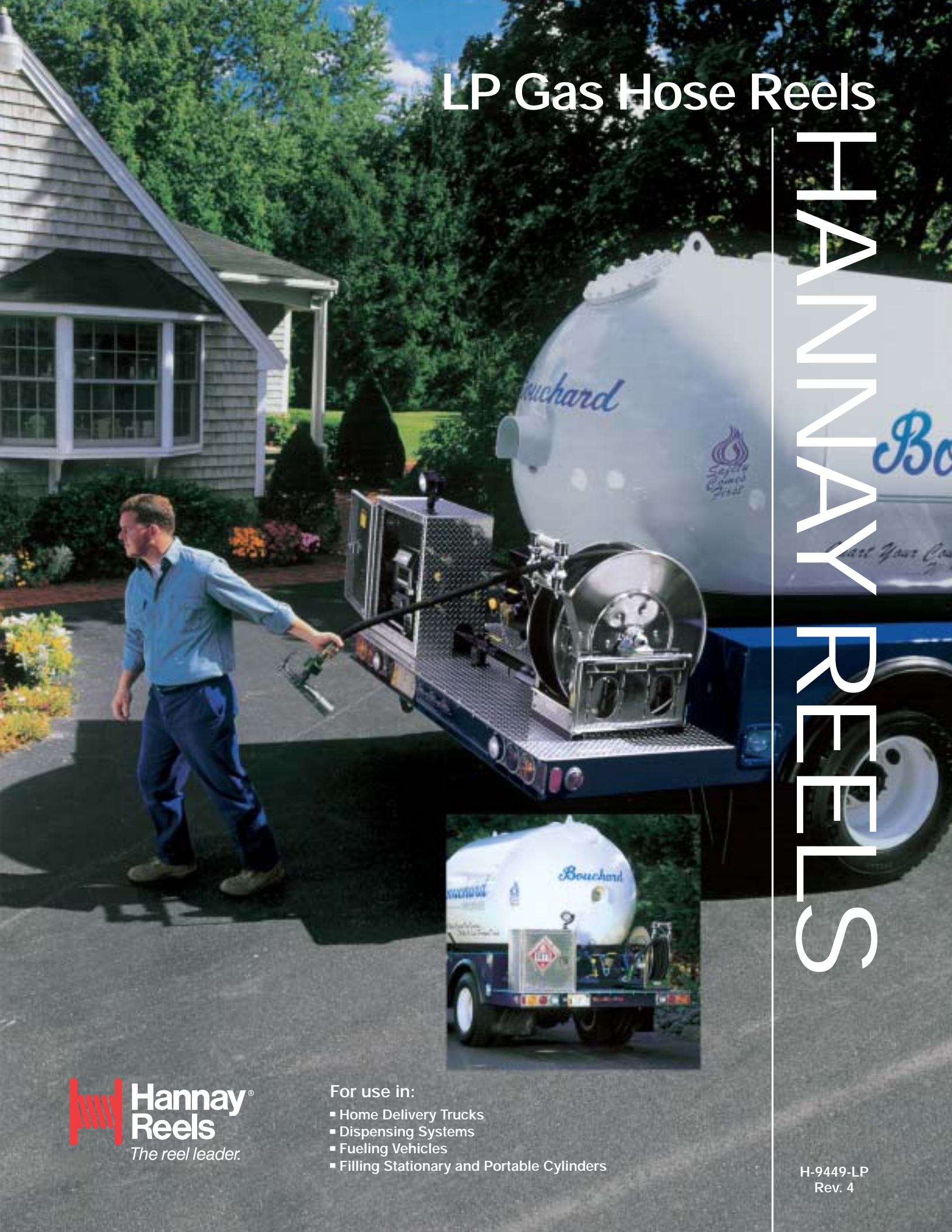


# LP Gas Hose Reels

# HANNAY REELS



For use in:

- Home Delivery Trucks
- Dispensing Systems
- Fueling Vehicles
- Filling Stationary and Portable Cylinders

H-9449-LP  
Rev. 4

## Note to Designers and Engineers:

The reels shown in this catalog are the standard of the industry.

These models reflect various installation and performance requirements.

The high quality of our standard steel construction is only the beginning.

Hannay Reels offers any size configuration to fit a defined space, and we construct many models of reels of aluminum or stainless steel. **Specifically, we use 5000 and 6000 Series aluminum and 304 stainless**

**steel in the manufacture of frames, discs, drums and internals as well as other structural components. This type of construction eliminates the need for maintenance repainting and part replacement due to rust or corrosion.**

Please consult factory on any fuel handling questions.

For the many accessories and components available on our standard reel models such as roller guides, switches, brakes and locks, etc., please refer to our Ordering Guide & Accessory Catalog H-9412-OA.

Series  
PB/DPB

## Manual or Power Rewind Reels To handle single 1" through 1-1/2" I.D. hose.

Series PB are explosion-proof reels that are available in either power or manual rewind. These reels are used singly or in pairs for liquid and for vapor return hoses.

The new DPB Series reel offers the features of variable speed control when installed with the proper valves, and have added torque and rewind power. The smooth quiet operation of the DPB series is achieved by eliminating the use of chain and sprockets, and the associated maintenance required.

### Rewind:

Choose gear-driven crank rewind, chain and sprocket drive powered by an electric, hydraulic or compressed air motor or direct drive hydraulic rewind motor. Gear-driven mechanism with pinion shaft brake can be specified as auxiliary crank rewind on PB Series power rewind reels, at extra cost. It is standard on DPB Series Reels.

### Brakes & Locks:

Crank rewind reels and direct drive hydraulic rewind reels will be supplied with pinion brake. Electric powered rewind reels will be supplied with a strap brake. Other brake and locking devices may be specified. (See Ordering Guide & Accessory Catalog).

### Inlet:

Standard inlet is 90° ball bearing swivel joint with 1-1/2" female NPT threads.

### Outlet:

Standard outlet is a flanged riser with **1" female NPT threads**. Standard inlet, outlet riser, and hub assembly are steel.

**Other sizes and/or threads can be furnished and must be specified.**

### Optional Rollers:

Rollers may be purchased as accessory items. Specify roller position when ordering. Mounting brackets are necessary (See Ordering Guide & Accessory Catalog).

### Operating Pressures & Temperatures:

These reels operate at pressures to 350 psi (24 bar) and handle product temperatures from -40° F to +350° F (-40° C to +177° C).

**Reels to operate at other pressures and temperatures can be furnished at extra cost.**

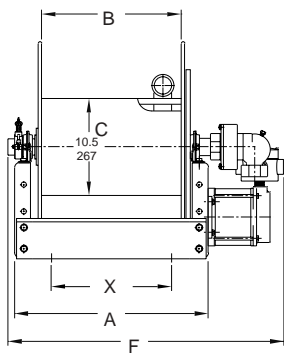


Series PB  
Electric Rewind Shown

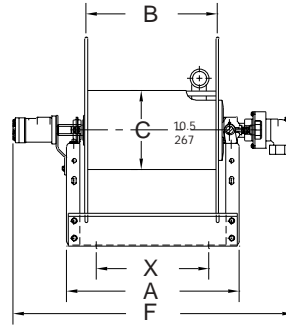
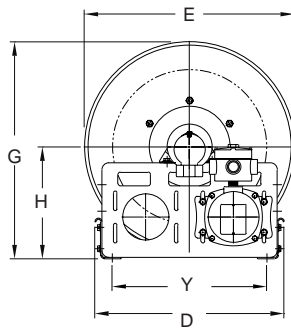


Series DPB  
Direct Drive Hydraulic Rewind

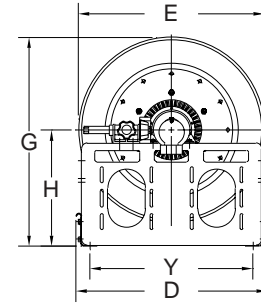
## Dimensions and capacities



Series EPB



Series DPB



NOTICE: **A FLEXIBLE CONNECTOR MUST BE USED BETWEEN THE INLET PIPE AND THE INLET SWIVEL JOINT.**

**BE SURE TO CHECK DIMENSIONS AND WEIGHTS PRIOR TO ORDERING.**

To receive a detailed parts breakdown drawing for Series PB, request ISO 18.

Hose Capacity of Reel <u>feet</u> m.		Model Number	Reel Dimensions <u>Inches</u> mm.													Approx. Weight Crank Rewind <u>lb.</u> kg. See Note 3	
I.D. (in)	<b>1"</b>	<b>1-1/2"</b>	X, Y indicate mounting holes													NET	SHIP
I.D. (mm)	25	38	A	B	D	E	F	F	F	F	F	G	H	X	Y		
O.D. (in)	<b>1.5"</b>	<b>2.16"</b>					CRANK	ELEC.	AIR	HYD.	DRIVE						
O.D. (mm)	38	55									HYD						
125	50	PB24-23-24	21	15.5	20.5	22.75	28	29.25	28.75	28.75	35.12	23.5	12.12	13	16.75	102	144
38	15		533	394	521	578	711	743	730	730	892	597	308	330	425	46	65
150	75	PB30-23-24	27.5	22	20.5	22.75	34.5	35.75	35.25	35.25	41.62	23.5	12.12	19.5	16.75	115	157
46	23		699	559	521	578	876	908	895	895	1057	597	308	495	425	52	71
150	75	PB24-25-26	21	15.5	25.5	24.75	28	29.25	28.25	28.25	35.12	27.88	15.5	11	21.75	110	152
46	23		533	394	648	629	711	743	718	718	892	708	394	279	552	50	69
200	110	PB28-25-26	25.5	20	25.5	24.75	32.5	33.75	33.25	33.25	39.62	27.88	15.5	17.5	21.75	123	165
61	34		648	508	648	629	826	857	845	845	1006	708	394	445	552	56	75
250	100	PB22-30-31	19	13.5	25.5	28.75	26	27.25	26.75	26.75	33.12	29.88	15.5	11	21.75	118	168
76	30		483	343	648	730	660	692	679	679	841	759	394	279	552	54	76
200	75	PB18-33-34	14.5	9.5	31.5	31.75	22	23.75	22.75	22.75	29.12	33.62	17.75	7	27.75	117	167
61	23		368	241	800	806	559	603	578	578	740	854	451	178	705	53	76

Specifications subject to change.

**Notes:**

- Upon request, reels can be supplied with drum lengths other than shown and with disc sizes in other diameters.
- Dimensions shown for reels up to and including 30-31 disc size reflect pressed frames. All others are channel frames.
- Weights shown in chart are for crank rewind models. ADD these amounts for power rewind models:

	Net (lbs.)	Ship (lbs.)	Net (kg.)	Ship (kg.)
Electric	40	40	18.1	18.1
Hydraulic	20	20	9.1	9.1
Air	20	20	9.1	9.1

- When ordering power rewind models, prefix model number with:

A = Air Rewind – Supplied with control valve and hose.  
 E = Explosion Proof Electric Rewind (1/2 HP) – Supplied with explosion proof switch, solenoid, and junction box.  
 HD = Hydraulic Rewind – Not supplied with control valve.  
 D = Direct Drive Hydraulic Rewind – Not supplied with control valve

## Power Rewind Reels with Top-Mounted Guidemaster To handle single 1" or 1-1/2" I.D. hose.

Series PBGMT hose reels are particularly suitable for open-deck or compartment mounting, especially when recovery is at an angle other than straight off the reel.

### Rewind:

Choose gear-driven crank rewind, chain and sprocket drive powered by an electric, hydraulic or compressed air motor or direct drive hydraulic rewind motor. Gear-driven mechanism with pinion shaft brake can be specified as auxiliary crank rewind on PB Series power rewind reels, at extra cost. It is standard on DPB Series Reels.

### Brakes & Locks:

Crank rewind reels and direct drive hydraulic rewind reels will be supplied with pinion brake. Electric powered rewind reels will be supplied with a strap brake. Other brake and locking devices may be specified. (See Ordering Guide & Accessory Catalog).

### Inlet:

Standard inlet is 90° ball bearing swivel joint with 1-1/2" female NPT threads.

### Outlet:

Standard outlet is a flanged riser with **1" female NPT threads**. Standard inlet, outlet riser, and hub assembly are steel.

**Other sizes and/or threads can be furnished and must be specified.**

### Operating Pressures & Temperatures:

These reels operate at pressures to 350 psi (24 bar) and handle product temperatures from -40° F to +350° F (-40° C to +177° C).

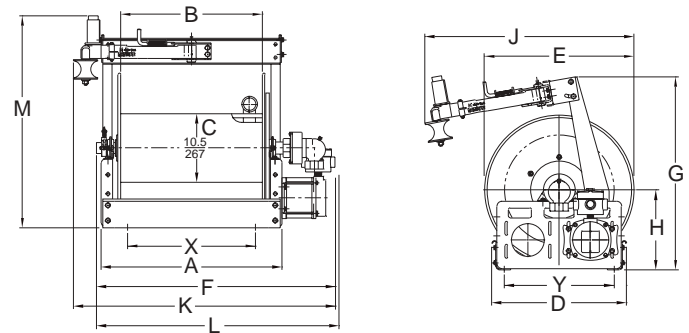
**Reels to operate at other pressures and temperatures can be furnished at extra cost.**



Series PBGMT

Standard Configuration Shown / Electric Rewind Shown

### Dimensions and capacities



Series PBGMT

NOTICE: **A FLEXIBLE CONNECTOR MUST BE USED BETWEEN THE INLET PIPE AND THE INLET SWIVEL JOINT.**

**BE SURE TO CHECK DIMENSIONS AND WEIGHTS PRIOR TO ORDERING.**

To receive a detailed parts breakdown drawing for Series PBGMT, request ISO 18 and ISO 195.

Hose Capacity of Reel feet m.		Model Number	Reel Dimensions inches mm.															Approx. Weight Power Rewind lb. kg.		
I.D. (in)	1" 1-1/2"	For Power Rewind See Note 2	X, Y indicate mounting holes															NET	SHIP	
I.D. (mm)	25 38		A	B	D	E	F	F	F	F	G	H	J	K	L	M	X			Y
O.D. (in)	1.5" 2.16"							AIR	HYD	DIRECT										
O.D. (mm)	38 55						ELEC.		HYD	HYD										
125	50	PBGMT 24-23-24	21	15.5	20.5	22.75	29.25	28.25	28.25	35.12	29.5	12.12	33	36.75	30	31.5	13	16.75	168	193
38	15		533	394	521	578	743	718	718	892	749	308	838	933	762	800	330	425	76	88
150	75	PBGMT 30-23-24	27.5	22	20.5	22.75	35.75	34.75	34.75	41.62	29.5	12.12	33	40.62	36.75	31.5	19.5	16.75	178	208
46	23		699	559	521	578	908	883	883	1057	749	308	838	1032	933	800	495	425	81	94
200	110	PBGMT 28-25-26	25.5	20	25.5	24.75	33.75	32.75	32.75	39.62	33	15.5	34	39	34.75	35	17.5	21.75	181	211
61	34		648	508	648	629	857	832	832	1006	838	394	864	991	883	889	445	552	82	96

Specifications subject to change.

#### Notes:

- Upon request, reels can be supplied with drum lengths other than shown and with disc sizes in other diameters.
- When ordering power rewind models, prefix model number with:
  - A = Air Rewind - Supplied with control valve and hose.
  - E = Explosion Proof Electric Rewind (1/2 HP) - Supplied with explosion proof switch, solenoid, and junction box.
  - HD = Hydraulic Rewind - Not supplied with control valve.
  - D = Direct Drive Hydraulic Rewind - Not supplied with control valve.

- Dimension J is maximum, with Guidemaster in operating position. Dimension K is maximum, with Guidemaster in traveling position opposite rewind motor, as shown in dimensional drawing. Dimension L is maximum, with Guidemaster in traveling position on same side as rewind motor.
- Guidemaster weight is approximately 21 lbs. Guidemasters are shipped as parts.

# Power Rewind Reels with Bottom-Mounted Guidemaster

## To handle single 1" or 1-1/2" I.D. hose.

The Hannay Series PBGMGB hose reel is designed specifically for open-deck or compartment mounting, especially when recovery is of an angle other than straight off the reel.

### Rewind:

Choose gear-driven crank rewind, chain and sprocket drive powered by an electric, hydraulic or compressed air motor or direct drive hydraulic rewind motor. Gear-driven mechanism with pinion shaft brake can be specified as auxiliary crank rewind on PB Series power rewind reels, at extra cost. It is standard on DPB Series Reels.

### Brakes & Locks:

Crank rewind reels and direct drive hydraulic rewind reels will be supplied with pinion brake. Electric powered rewind reels will be supplied with a strap brake. Other brake and locking devices may be specified. (See Ordering Guide & Accessory Catalog).

### Inlet:

Standard inlet is 90° ball bearing swivel joint with 1-1/2" female NPT threads.

### Outlet:

Standard outlet is a flanged riser with **1" female NPT threads**. Standard inlet, outlet riser, and hub assembly are steel.

**Other sizes and/or threads can be furnished and must be specified.**

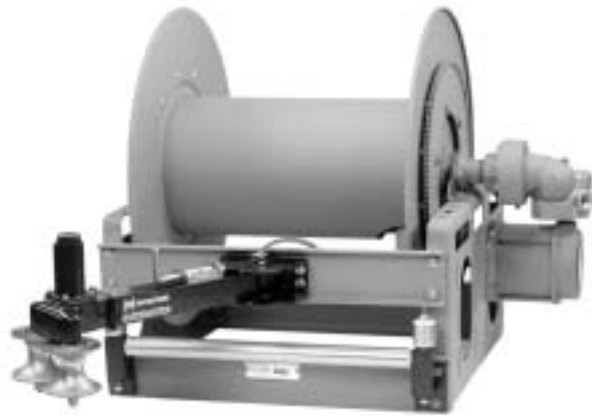
### Rollers:

Assembly B bottom wind roller supplied as standard.

### Operating Pressures & Temperatures:

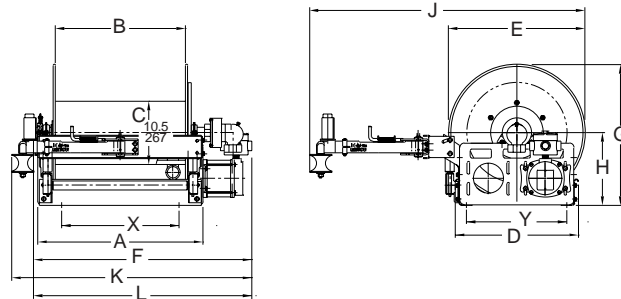
These reels operate at pressures to 350 psi (24 bar) and handle product temperatures from -40° F to +350° F (-40° C to +177° C).

**Reels to operate at other pressures and temperatures can be furnished at extra cost.**



Series PBGMGB  
Electric Rewind Shown

### Dimensions and capacities



Series EPBGMGB

NOTICE: **A FLEXIBLE CONNECTOR MUST BE USED BETWEEN THE INLET PIPE AND THE INLET SWIVEL JOINT.**

**BE SURE TO CHECK DIMENSIONS AND WEIGHTS PRIOR TO ORDERING.**

To receive a detailed parts breakdown drawing for Series PBGMGB, request ISO 18 and ISO 195.

Hose Capacity of Reel feet m.		Model Number	Reel Dimensions inches mm.														Approx. Weight Power Rewind lb. kg.			
			X, Y indicate mounting holes																	
I.D. (in)	1" 1-1/2"	For Power Rewind See Note 2	A	B	D	E	F	F	F	F	G	H	J	K	L	X	Y	NET	SHIP	
I.D. (mm)	25 38																			
O.D. (in)	1.5" 2.16"						ELEC.	AIR	HYD	DRIVE HYD										
O.D. (mm)	38 55																			
125	50	PBGMGB 24-23-24	21	15.5	20.5	22.75	29.25	28.25	28.25	35.12	23.5	12.12	49	36.75	30	13	16.75	160	185	
38	15		533	394	521	578	743	718	718	892	597	308	1245	933	762	330	425	73	84	
150	75	PBGMGB 30-23-24	27.5	22	20.5	22.75	35.75	34.75	34.75	41.62	23.5	12.12	49	36.75	36.75	19.5	16.75	170	200	
46	23		699	559	521	578	908	883	883	1057	597	308	1245	933	933	495	425	77	91	
200	110	PBGMGB 28-25-26	25.5	20	25.5	24.75	33.75	32.75	32.75	39.62	27.88	15.5	47.75	39	34.75	17.5	21.75	191	221	
61	34		648	508	648	629	857	832	832	1006	708	394	1213	991	883	445	552	87	100	
200	75	PBGMGB 18-33-34	14.5	9.5	31.5	31.75	23.75	22.75	22.75	29.12	33.62	17.75	56.75	33.5	26.75	7	27.75	175	225	
61	23		368	241	800	806	603	578	578	740	854	451	1441	851	679	178	705	79	102	

Specifications subject to change.

### Notes:

- Upon request, reels can be supplied with drum lengths other than shown and with disc sizes in other diameters.
- When ordering power rewind models, prefix model number with:
  - A = Air Rewind - Supplied with control valve and hose.
  - E = Explosion Proof Electric Rewind (1/2 HP) - Supplied with explosion proof switch, solenoid, and junction box.
  - HD = Hydraulic Rewind - Not supplied with control valve.
  - D = Direct Drive Hydraulic Rewind - Not supplied with control valve.

- Dimension J is maximum, with Guidemaster in operating position. Dimension K is maximum, with Guidemaster in traveling position opposite rewind motor, as shown in dimensional drawing. Dimension L is maximum, with Guidemaster in traveling position on same side as rewind motor. Maximum distance from frame of reel to outside edge of Guidemaster locked in traveling position is 11".
- Guidemaster weight is approximately 21 lbs. Guidemasters are shipped as parts.

## Power Rewind Liquid Reel with Manual Rewind Vapor Reel To handle 1" through 1-1/2" I.D. liquid hose & 1/2" through 1" vapor hose.

Series PBM combines a power rewind reel and a geared crank rewind reel on a single frame. Each reel is supported individually. It is recommended for service which requires use of vapor hose.

### Rewind:

Gear-driven crank rewind on vapor reel. Chain and sprocket drive powered by an electric, hydraulic or compressed air motor on liquid reel. Gear-driven mechanism with pinion shaft brake is standard on these reels.

### Brakes & Locks:

Reels will be supplied with a pinion brake. Other locking devices may be specified (See Ordering Guide & Accessory Catalog).

### Inlet:

Standard inlet is 90° ball bearing swivel joint with 1-1/2" female NPT threads. On manual rewind reel: 1" female NPT 90° ball bearing swivel joint.

### Outlet:

Power rewind liquid reel standard outlet is a flanged riser with **1" female NPT threads**. On manual rewind vapor reel standard riser is 1" female NPT.

Standard inlet, outlet riser, and hub assembly are steel.

**Other sizes and/or threads can be furnished and must be specified.**

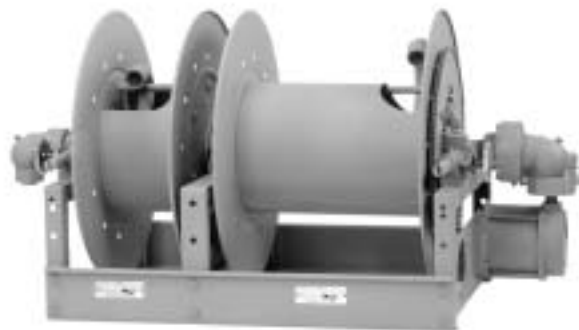
### Optional Rollers:

Rollers may be purchased as accessory items. Mounting brackets are necessary. Specify roller position when ordering (See Ordering Guide & Accessory Catalog).

### Operating Pressures & Temperatures:

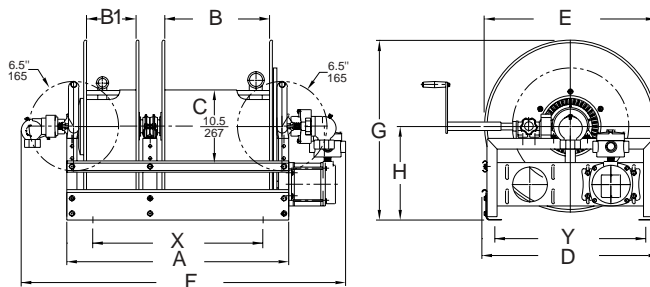
These reels operate at pressures to 350 psi (24 bar) and handle product temperatures from -40° F to +350° F (-40° C to +177° C).

**Reels to operate at other pressures and temperatures can be furnished at extra cost.**



**Series PBM**  
Standard Configuration Shown  
Electric Rewind Shown

### Dimensions and capacities



Series PBM

NOTICE: **A FLEXIBLE CONNECTOR MUST BE USED BETWEEN THE INLET PIPE AND THE INLET SWIVEL JOINT.**

**BE SURE TO CHECK DIMENSIONS AND WEIGHTS PRIOR TO ORDERING.**

To receive a detailed parts breakdown drawing for Series PBM, request ISO 123.

Hose Capacity of Reel feet m.		Model Number	Reel Dimensions inches mm.													Approx. Weight Power Rewind lb. kg.	
Liquid Reel	Vapor Reel		X, Y indicate mounting holes													NET	SHIP
I.D. (in)	1" 1-1/2"	For Power Rewind See Note 2	A	B	B1	D	E	F	F	F	G	H	X	Y	NET	SHIP	
I.D. (mm)	25 38																13 19 25
O.D. (in)	1.5" 2.16"	PBM 24-16-23-24	32	15.5	7.5	23.75	23	46.25	45.25	45.25	23.88	12.5	24.5	20	256	286	
O.D. (mm)	38 55																175 80 75
		PBM 30-16-23-24	38.5	22	7.5	23.75	23	52.75	51.75	51.75	23.88	12.5	31	20	264	294	
																	150 75
		PBM 28-16-25-26	36.5	20	7.5	25.5	24.75	50.75	49.75	49.75	25.88	13.5	29	21.75	267	297	
																	200 110

Specifications subject to change.

#### Notes:

1. Upon request, reels can be supplied with drum lengths other than shown and with disc sizes in other diameters.

2. When ordering power rewind models, prefix model number with:

A = Air Rewind – Supplied with control valve and hose.

E = Explosion Proof Electric Rewind (1/2 HP) – Supplied with explosion proof switch, solenoid, and junction box.

HD = Hydraulic Rewind – Not supplied with control valve.

# Spring Rewind Reels

## To handle 3/4" or 1" I.D. hose.

Single hose spring rewind reels are available in two frame configurations. The standard N series has a narrow frame and compact mounting base. The channel frame for heavy-duty applications is available in the 800 series and must be specified (Delete prefix N for Channel Frame).

### Rewind:

A heavy-duty spring motor provides self-contained rewind power. A non sparking ratchet assembly locks the reel when the desired length of hose has been payed out. A pull on the hose unlocks the reel and the spring motor retracts the hose. A declutching arbor is provided to prevent damage from reverse winding.

### Inlet:

Standard inlet is 90° ball bearing swivel joint with 1" female NPT threads.

### Outlet:

Standard outlet is 1" female NPT threads.

**Other sizes and/or threads can be furnished and must be specified.**

### Operating Pressures & Temperatures:

These reels operate at pressures to 350 psi (24 bar) and handle product temperatures from -40° F to +350° F (-40° C to +177° C).

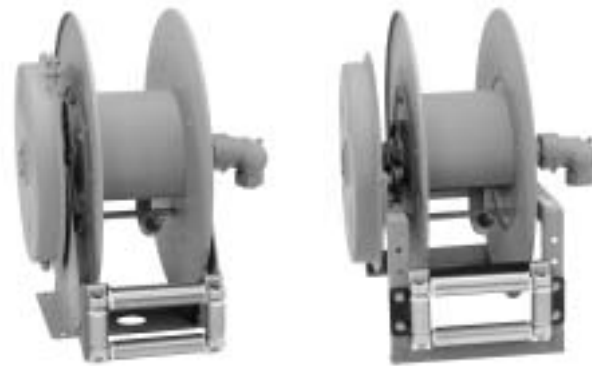
**Reels to operate at other pressures and temperatures can be furnished at extra cost.**

### Rollers:

All models are supplied with a 4-way roller assembly. Roller position must be specified (See Ordering Guide & Accessory Catalog).

### Hose Stop:

A hose stop should be used to prevent damage to rollers and nozzles and to permit adjustment of free hose length (See Ordering Guide & Accessory Catalog).

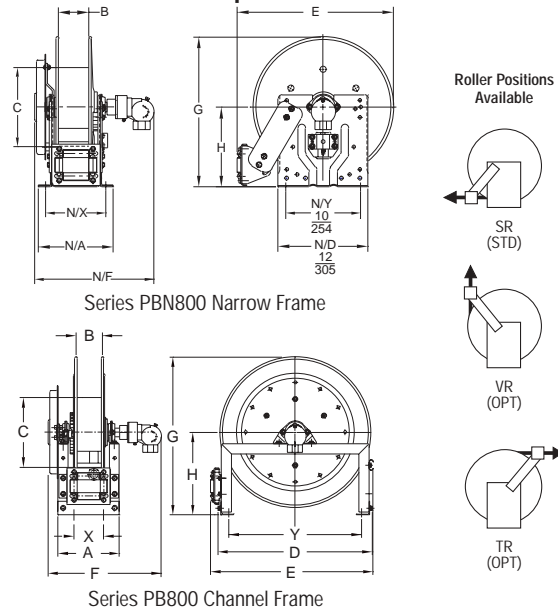


Series PBN800

Series PB800

Standard Configuration Shown

### Dimensions and capacities



NOTICE: **A FLEXIBLE CONNECTOR MUST BE USED BETWEEN THE INLET PIPE AND THE INLET SWIVEL JOINT.**

**BE SURE TO CHECK DIMENSIONS AND WEIGHTS PRIOR TO ORDERING.**

To receive a detailed parts breakdown drawing for Series PBN800, request ISO 81, for Series PB800, request ISO 42.

Hose Capacity of Reel				Model Number	Reel Dimensions																Approx. Weight		Roller Assy Supplied on Standard Models
feet m.					inches mm.																lb.	kg.	
I.D. (in)	1/2"	3/4"	1"	Delete prefix N for Channel Frame	X, Y indicate mounting holes																NET	SHIP	
I.D. (mm)	13	19	25		A	N/A	B	C	D	E	N/E	F	N/F	G	N/G	H	N/H	N/X	X	Y			
O.D. (in)	.94"	1.25"	1.5"																				
O.D. (mm)	24	33	40																				
65	60	35	PBN816-25-26B	9.25	10	4	10.5	25	26.12	25.25	17.63	15.75	25.88	26	13.5	13.62	8	4.5	22	96	131	N204	
20	18	11		235	254	102	267	635	663	641	448	400	657	660	343	346	203	114	559	44	59		
60	70	50	PBN818-25-26B	11.25	12	6	10.5	25	26.12	25.25	19.63	17.75	25.88	26	13.5	13.62	10	6.5	22	102	137	N206	
18	21	15		286	305	152	267	635	663	641	499	451	657	660	343	346	254	165	559	46	62		
110	75	40	PB816-30-31-15.5G	9.25	-	4	15.5	28.5	30.5	-	17.63	-	31.88	-	17	-	-	4.5	25.5	124	159	R204	
34	23	12		235	-	102	394	724	775	-	448	-	810	-	432	-	-	114	648	56	72		
75	85	75	PB820-25-26A	13.25	-	8	10.5	25	27	-	22.38	-	25.88	-	13.5	-	-	8.5	22	131	166	R308	
23	26	23		337	-	203	267	635	686	-	568	-	657	-	343	-	-	216	559	59	75		
75	100	100	PB820-30-31A	13.25	-	8	15.5	28.5	30.5	-	22.38	-	31.38	-	17	-	-	8.5	25.5	137	172	R308	
23	30	30		337	-	203	394	724	775	-	568	-	797	-	432	-	-	216	648	62	78		

Specifications subject to change. Other sizes, from standard components, available on request.

## Hannay will go to any length to provide you with the hose reel you need.

As the leading manufacturer of hose and cable reels, Hannay knows what you need in a reel. You need a reel that's long-lasting. Built to high standards. One that requires only minimal routine maintenance. A reel that helps you get the job done.

### You need Hannay Reels.

All our reels are made to stringent specifications, so you know you're buying reels you can depend on year after year, even under the most demanding conditions. Plus, we make reels for every application and every industry. We have 2700 standard models and if one of these doesn't meet your needs, we'll work with you to design a reel that fits your specific application.

This catalog contains our most popular LP gas hose reels. For other hose reels, cable reels, or reels for specific applications, just ask and we'll send you the information you need. After all, when you deal with the reel leader, it's easier to have a reel choice.

### To order Hannay Reels

Please refer to our Ordering Guide & Accessory Catalog. For more information on our 2700 standard models of hose and cable reels, please ask about specific product catalogs.

Other Hannay Catalogs available are: Aviation Refueling, Cable, Firefighting, Hose, Petroleum Delivery, Portable, Spray, Stainless, Rescue, Welding, Audio/Video, Pressure Wash, Static Grounding, Utility Grounding and Ordering Guide & Accessory Catalog.



*Rugged, reliable Hannay reels make LP gas home delivery faster, safer and more efficient.*



553 State Route 143  
Westerlo, NY 12193-0159  
Telephone 518-797-3791  
Toll Free 1-877-GO-REELS (467-3357)  
FAX 1-800-REELING (733-5464) USA  
or  
FAX 518-797-3259 (International)  
[www.hannay.com](http://www.hannay.com)  
[reels@hannay.com](mailto:reels@hannay.com)