

EXP-15.DWG

REVISION: U

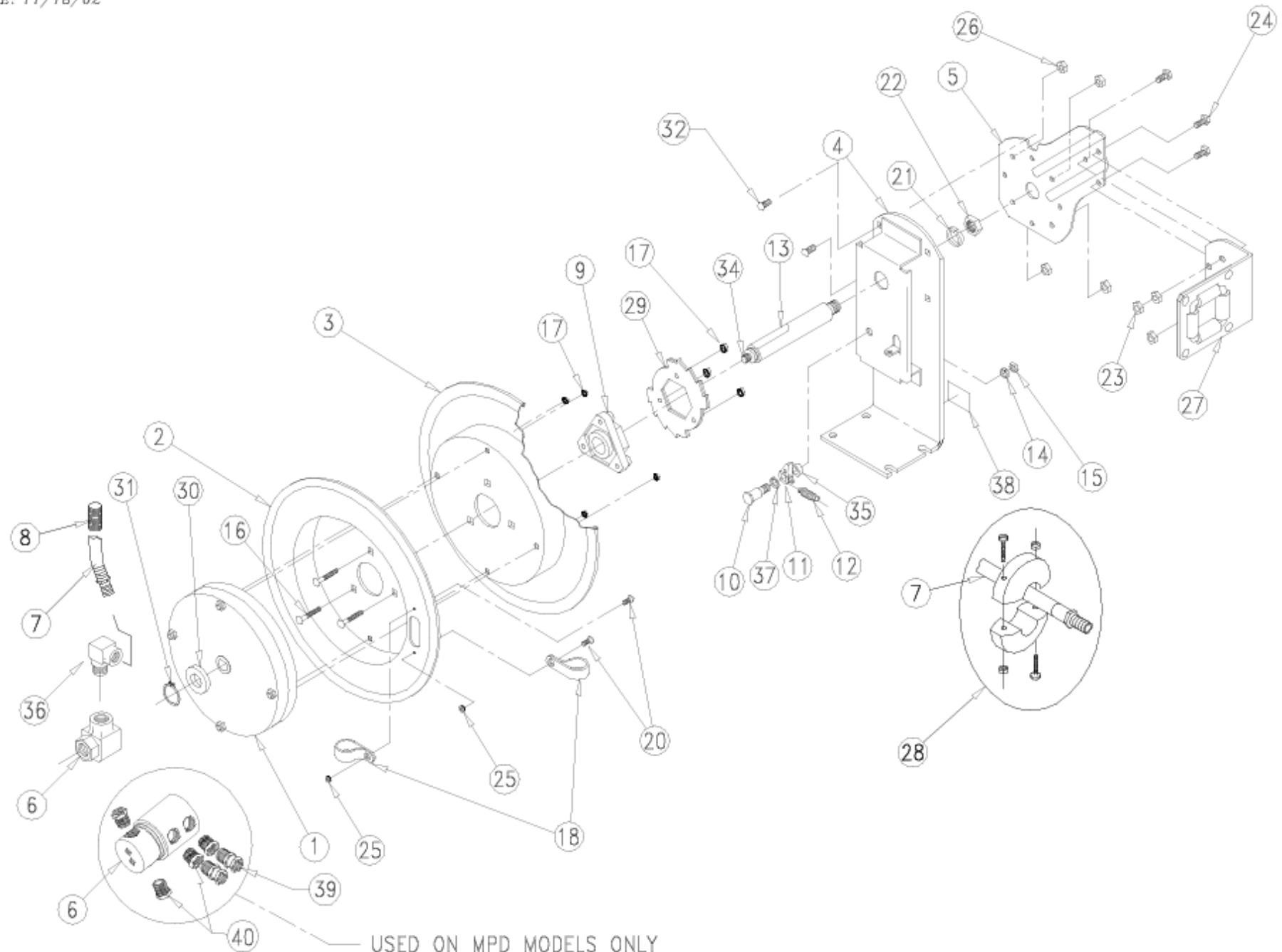
ECO NO.: 1891-2

DRAWN BY: J. KNOSALLA

DATE: 11/18/02

COXREELS

SERIES SH, MP, MPD AND HP



COMMON PARTS TO ALL SERIES SH, MP AND HP REELS

ITEM NO.	PART NO.	DESCRIPTION	QTY REQ'D
4	1743-2	BASE, 19" REEL	1
5	1732	ARM, GUIDE, 19"	1
9	1776-3	ASSY., HUB BEARING	1
10	1620	BOLT, SHOULDER, ½"x1½"	1
11	640-1-SS	CAM, LOCKING	1
12	274-1-SS	SPRING, DOG	1
14	437	WASHER, LOCK, 3/8"	1
15	184	NUT, JAM, 3/8-16	1
16	1953	CARRIAGE BOLT, 1/4-20 x 1.5"	3
17	125	NUT, KEPS, 1/4-20	7
20	245	BOLT, 10-32 x 3/8	2
21	438	WASHER, LOCK, 5/8"	1
22	3584	NUT, HEX, 5/8-11	1

ITEM NO.	PART NO.	DESCRIPTION	QTY REQ'D
23	112	WASHER, LOCK, 5/16"	3
24	312	BOLT, 5/16-18	3
25	130	NUT, KEPS, 10-32	2
26	111-1	NUT, LOCK 5/16-18	7
27	1728-1	ASSY., ROLLER BRACKET	1
29	1924	LOCKING RING	1
30	1755-1	WASHER, SPACER	1
31	1753	RETAINING RING (5160-75)	1
32	10220-75	BOLT, CARRIAGE, 5/16-18x3/4"	4
34	10235-SS	SETSCREW, 3/8-16x1"-SS	1
35	6440-SS	WASHER, SPACER	1
37	6441-1	WASHER, SPACER	1
38	10925-5	LABEL	1

ITEM NUMBER

MODEL NO.	ITEM NUMBER															
	1	2	3	6	* 7	* 7	* 7	* 8	13	18	27	* 28	36	39	40	
	SPRING	DRUM	DRUM	SWIVEL	HOSE (STD)	HOSE (-OG)	HOSE (-RH)	HOSE GRD	AXLE	CLAMP (2)	ROLLER BRKT	BALL STOP	ELBOW	ADAPTER	BUSHING	
SH-N-160	690-3	1703	1702	1969	5150-60	5121-60	3870-60	237-1	1793	2169	1728-1	131	-	-	-	
SH-N-350	690-2	1703	1702	1935	5153-50	5101-50	5045-50	237-1	1793	381	1728-1	131-3	-	-	-	
SH-N-360	646	1703	1702	1935	5153-60	5101-60	5045-60	237-1	1793	381	1728-1	131-3	-	-	-	
SH-N-435	690-1	1703	1702	439	5154-35	5131-35	5066-35	398-1	1793	383	1728-1	131-4	-	-	-	
SH-N-440	691-2	1703	1702	439	5154-40	5131-40	5066-40	398-1	1793	383	1728-1	131-4	-	-	-	
SH-N-450	691-3	1703	1702	439	5154-50	5131-50	5066-50	398-1	1793	383	1728-1	131-4	-	-	-	
SH-N-525	691-1	1703	1702	426	5155-25	5163-25	5091-25	398-1	1793	384	1728-1	430	385	-	-	
SHF-N-525	691-1	1703-1	1702	426	5097-25	-	-	398-1	1793	384	1728-1	430	385	-	-	

MODEL NO.	ITEM NUMBER					* 8	13	18	27	* 28	36	39	40
	1	2	3	6	* 7								
	SPRING	DRUM	DRUM	SWIVEL	HOSE (STD)	HOSE GRD	AXLE	CLAMP (2)	ROLLER BRKT	BALL STOP	ELBOW	ADAPTER (2)	BUSHING
MPDL-N-150	670	1703	1702	7516	-	-	1794	383	1829-2	-	-	816	7540-1 (4)
MPDL-N-330	670	1703-1	1702	7516	-	-	1794	384	1829-2	-	-	815	7540 (2)
MPDL-N-430	670	1703-1	1702	7516	-	-	1794	397	1829-2	-	-	814	-
MP-N-340	670	1703	1702	1935	5224-40	237-1	1794	381	1728-1	131-3	-	-	-
MP-N-350	670	1703	1702	1935	5224-50	237-1	1794	381	1728-1	131-3	-	-	-
MP-N-435	650	1703	1702	439	5256-35	398-1	1793	383	1728-1	131-4	-	-	-
MP-N-440	670	1703	1702	439	5256-40	398-1	1794	383	1728-1	131-4	-	-	-
MP-N-450	670	1703	1702	439	5256-50	398-1	1794	383	1728-1	131-4	-	-	-

MODEL NO.	ITEM NUMBER					* 8	13	18	27	* 28	36	39	40
	1	2	3	6	* 7								
	SPRING	DRUM	DRUM	SWIVEL	HOSE (STD)	HOSE GRD	AXLE	CLAMP (2)	ROLLER BRKT	BALL STOP	ELBOW	ADAPTER	BUSHING
HP-N-140	670	1703	1702	499	5304-40	237-1	1794	115	1728-1	131	-	-	-
HP-N-150	670	1703	1702	499	5304-50	237-1	1794	115	1728-1	131	-	-	-
HP-N-160	675	1703	1702	499	5304-60	237-1	1794	115	1728-1	131	-	-	-
HP-N-335	650	1703	1702	521	5336-35	237-1	1793	613	1728-1	131-3	-	-	-
HP-N-340	670	1703	1702	521	5336-40	237-1	1794	613	1728-1	131-3	-	-	-
HP-N-350	670	1703	1702	521	5336-50	237-1	1794	613	1728-1	131-3	-	-	-

* ON "LESS HOSE" MODELS (SHL-/MPL-/HPL-) EXCLUDE ITEMS #7, #8, AND #28.

NOTE: MODELS SUPPLIED WITH "STANDARD" HOSE UNLESS SUFFIXED WITH "-OG" OR "-RH". USE HOSE NUMBERS AS NOTED ABOVE.

REEL ASSEMBLY REPORTS: R100 (LATCHOUT REMOVAL), R101 (LOCKING RING PLACEMENT), R112 (TIGHTENING AND TORQUING)

REVISION: T

ECO: 1809-5

DATE: 1/9/02

NAME: J. KNOSALLA